

Degree Path: B.A. in Theatre

College of Music and Communication Arts

22-23 Catalog

Freshman Year

Fall Semester	15 hours
GES 1122	Strategies for Student Success ∞
ENG 1113	Composition and Rhetoric I ∞
MTH 1113/1123	(Math option) ∞
HIS 1113	American History I ∞
PED 1101-2291	(Activity Course option 1) ∞
REL 1173	Introduction to Biblical Literature ∞

Spring Semester	16 hours
COM 1143	Fundamentals of Speech ∞
COM 2213	Mass Communication in Society ◇
ENG 1123	Composition and Rhetoric II ∞ (prereq: ENG 1113)
BIO 1113/PHY 1113	(Science option) ∞
DRA 2211	Play Production ∞
REL 1133	Authentic Christianity ∞

Sophomore Year

Fall Semester	16 hours
ENG 2273/2233	(English option) ∞/◇ (ENG 2243, if preferred, is spring only) (prereq: ENG 1123)
HUM 1113	Introduction to Fine Arts ◇
DRA 2123	Fundamentals and Theories of Acting *
COM 2313	Scriptwriting for Theatre ◇
PED 1101-2291	(Activity Course option 2) ∞
BIB 1223	The Church in Ministry & Mission ∞

Spring Semester	15 hours
GOV 2213	National & State Government ∞
PSY 1153	Introduction to Psychology ∞
DRA 3133	Directing for Theatre **
DRA 2211	Play Production ∞
PED 2232	Wellness and Lifestyle ∞
BIB 2213	Bible Study ∞

Junior Year

Fall Semester	16 hours
COM 4113	Communication Theory ◇
DRA 2211	Play Production ∞
DRA 3123	History of Drama **
DRA 3153	Advanced Theories of Acting I **
DRA XXX3	(Drama Elective Course option 1)
THE 2113	Intro to Theology/Apologetics ∞

Spring Semester	15 hours
COM 4123	Communication History ◇
COM 3513	Rhetorical Studies in Film I * (COM 3523, if preferred, is even years only)
DRA 3163	Advanced Theories of Acting II *
DRA XXX3	(Drama Elective Course option 2)
THE 2333	Pentecostal Doctrine/History ∞

Junior-Senior Summer 3 hours

COM 4483	Communication Internship (COM 4480, if preferred, is 0 hours)
----------	--

Senior Year

Fall Semester	15 hours
COM 4153	Communication Ethics ◇
DRA 2233	Stage Makeup *
DRA XXX3	(Drama Elective Course option 3)
XXX XXXX	(General Elective Course option 1)
XXX XXXX	(General Elective Course option 2)

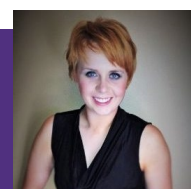
Spring Semester	15 hours
DRA XXX3	(Drama Elective Course option 4)
DRA XXX3	(Drama Elective Course option 5)
XXX XXXX	(General Elective Course option 3)
XXX XXXX	(General Elective Course option 4)
XXX XXXX	(General Elective Course option 5)

Please Note:

- This sample schedule is only a suggested path and does not reflect individual variation necessary due to course-offering alterations, change of major, retaking of courses, transfer credits, spring start, summer courses, or conditional acceptance.
- You should consult your department chair, program coordinator, course scheduler, and peer advisor regarding how your specific circumstance will affect your sequence of these courses for graduation completion.
 - ∞ every fall and spring semester
 - * only that semester in odd years
 - *** to be taken *only* in specified semester
 - ◇ every year only fall/spring/summer (as listed)
 - ** only that semester in even years
 - ∞/◇ offering differs in order listed



Your Program Coordinator:
Jacqueline Cabrera
SAGU Professor of Theatre
jcabrera@sagu.edu



Degree Path: B.A. in Theatre

College of Music and Communication Arts

22-23 Catalog

OVERVIEW

The Theatre Arts program is designed to prepare students for a variety of careers in the theatre industry. Key arenas in this profession include: acting, coaching, directing theatrical design, (lighting, set, makeup, costume) stage management, artistic director, church artistic director, kids church, youth ministry, drama therapy, marketing, , etc. Theatre Education is an area with much possibility: public, charter, private as well a opportunities to teach overseas to serve as an opportunity for missions work.

CAREER OPPORTUNITIES

Film industry, professional theatre, Marketing, Education, playwriting/scriptwriting, Church/Ministry (youth and kids church) lighting design, set design, makeup and costuming.

PROGRAM HIGHLIGHTS

SAGU Theatre produces a minimum of four shows a year and provides opportunities for students to serve as actors, directors, playwrights, stage managers, set designers, light designers, makeup designers, and choreographers. Also, Students take scriptwriting in the fall and have the opportunity to see their play produced in the spring. This gives students experience in all facets of Theatre.

PROGRAM REQUIREMENTS

GENERAL EDUCATION STUDIES 54 Hours

General Education: 14 hours

- COM 1143 Fundamentals of Speech Communication
- ENG 1113 Composition and Rhetoric I
- ENG 1123 Composition and Rhetoric II
- GES 1122 Strategies for Student Success
- 3 hours from the following:
 - ENG 2233 American Literature before Civil War
 - ENG 2243 American Literature after Civil War
 - ENG 2273 Introduction to Literature

Social/Behavioral Sciences: 9 hours

- GOV 2213 National and State Government
- HIS 1113 American History I
- PSY 1153 Introduction to Psychology

Natural Science/Mathematics: 6 hours

- 3 hours from the following:
 - BIO 1113 Biological Science **OR**
 - PHY 1113 Physical Science
- 3 hours from the following:
 - MTH 1113 College Math **OR**
 - MTH 1123 College Algebra

Humanities/Fine Arts: 3 hours

- HUM 1133 Introduction to Fine Arts

Physical Education: 4 hours

- PED 2232 Wellness and Lifestyle
- 2 hours from activity courses without duplication:
PED 1101-2291

General Biblical Studies: 18 hours

- BIB 1223 The Church in Ministry and Mission
- BIB 2213 Bible Study
- REL 1133 Authentic Christianity
- REL 1173 Introduction to Biblical Literature
- THE 2113 Introduction to Theology & Apologetics
- THE 2333 Pentecostal Doctrine and History

MAJOR STUDIES 57 Hours

Core Studies: 21 hours

- COM 2213 Mass Communication in Society
- COM 2313 Scriptwriting for Theatre
- COM 3513 Rhetorical Studies in Film I **OR**
COM 3523 Rhetorical Studies in Film II
- COM 4113 Communication Theory
- COM 4123 Communication History
- COM 4153 Communication Ethics
- COM 4483 Communication Internship **OR**
COM 4480 Communication Arts Internship (-0-credit)

Professional Development: 36 hours

- DRA 2123 Fundamentals and Theories of Acting
- DRA 2211 Play Production (taken 3 times for 3 hrs)
- DRA 2233 Stage Makeup
- DRA 3123 History of Drama
- DRA 3133 Directing for Theatre
- DRA 3153 Advanced Theories of Acting I
- DRA 3163 Advanced Theories of Acting II
- 15 hours from the following:
 - DRA 2223 The Art of Storytelling
 - DRA 2333 Theatrical Movement
 - DRA 3343 Voice and Diction
 - DRA 3353 Script Analysis
 - DRA 4123 Theatrical Design
 - DRA 4133 Dramaturgy
 - DRA 4143 Advanced Theories of Acting III

GENERAL ELECTIVES 15 HOURS (18 hours w/COM 4480)

- 15 hours of student's choice

TOTAL PROGRAM REQUIREMENTS 126 Hours



Revised on 08/15/2023

Your Department Chair:
Rob Price
Associate Professor of Digital Media
rprice@sagu.edu

